



PATIENT SAFETY
AWARDS 2020

Brought to you by
HSJ

PROJECT SHOWCASE

BEST HEALTHTECH SOLUTION FOR PATIENT SAFETY

WINNER



COUNTY DURHAM AND DARLINGTON FT HEALTH CALL DIGITAL CARE HOME

To improve the safety and care that is provided to care home residents, Health Call Digital Care Home (HCDCH) was developed. HCDCH is a digital solution that enables care homes to provide information to the health care setting. Using the recognised SBAR Tool (Situation, Background, Assessment and Recommendation) and calculating the NEWS2 score from clinical observations provided.

As part of the implementation, care home staff are upskilled to be able to take the observations and how to input the information into the app, using a WASP framework. Training is provided about 'normal levels' and what the NEWS2 scores mean, but we don't expect unqualified care workers to make any clinical or escalation decision. The unique element of HCDCH is that information is sent directly to a clinician and the escalation and priority is determined by nursing staff.

JUDGES COMMENTS

Judges said this is an excellent entry, addressing a key patient safety issue in linking care homes with acute care, and exemplifying the benefits for patients in connecting professionals via timely and relevant information. It is a fantastic example of multidisciplinary work that has resulted in enhancements to both the patient and professional experience, as well as the widespread embedding of national standards. Overall this project demonstrates how patient safety and care can be maximised in a setting that is facing very challenging times.



BEST HEALTHTECH SOLUTION FOR PATIENT SAFETY

HIGHLY COMMENDED



South Tyneside and Sunderland FT Development of an Electronic Paediatric Emergency Department Asthma Assessment Tool (PEDAAT) and Care Pathway

Reducing the UK Paediatric asthma mortality rate, the highest in Europe, is a NHS 10 year plan priority. The National Review of Asthma Deaths (NRAD) concluded that 46% were preventable. An electronic Paediatric Emergency Department Asthma Assessment Tool (PEDAAT) has been developed using NRAD History and Discharge Care Standards, linking to an 'Asthma Care Pathway' on meeting ≥ 1 of the 4 Secondary Care Follow Up standards. A dedicated clinic provides patient-focused care within 2 weeks aiming to empower parents with asthma management using BeatAsthma resources (www.beatasthma.co.uk). PEDAAT has captured 100% of high-risk children and has reduced PED attendances (62%) and inpatient stays (71%).

JUDGES COMMENTS

An incredibly powerful message sits behind the PedaAT initiative, and the passion behind the project is apparent. Whilst this project does not show significant financial savings, patient safety benefits are clear, compelling, and well evidenced, partially due to the excellent collaboration levels with other local organisations. Scaling this nationally, and also into adult asthma alongside paediatric asthma, would be massively beneficial for patient safety, improved experience, and efficiency.

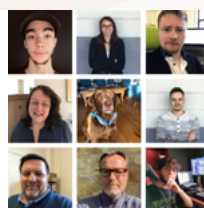
FINALISTS



Coventry and Warwickshire Partnership Trust Safer acute inpatient care in Mental Health

Coventry and Warwickshire Partnership NHS Trust have been working in partnership with technology provider (Oxehealth) for the past three years, to closely develop and deploy a digital tool to improve patient safety.

At the Caludon Centre, the acute inpatient facility in the trust, the team have deployed the technology and found a reduction in self-harm and assaults as well as improvements to patient and staff experience.



Focus Games and NHS Partners FluBee Game

Engaging with staff is the starting point for any vaccination campaign. This is especially important for staff with doubts about flu or the vaccine.

In 2016 Focus Games worked with Joan Pons Laplana and James Paget University Hospitals to develop a digital game that would engage staff and challenge common myths. It was called Flu Bee Game.

The game improves vaccine uptake by engaging staff on their phone. It does two vital jobs:

1. Challenges common misconceptions
2. Tells staff where to get vaccinated

Since 2016 the game has been used in over 40 NHS trusts and 300 care homes.

BEST HEALTHTECH SOLUTION FOR PATIENT SAFETY

FINALISTS



Healthier Lancashire and South Cumbria ICS

WellPRES: Digital Solution for enhanced delivery of coordinated care and self management

WellPRES is a patient- centric solution, designed to support clinicians to deliver quality care, as well as empowering patients to co-manage their health condition(s) along a managed care pathway.

The solution has been co-designed by patients, clinicians, and technology providers etc., through a programme of engagement workshops. WellPRES was implemented across the Lancashire and South Cumbria region in October 2019. The recent integration of WellPRES with our Local Person Record Exchange Service(LPRES) enables clinicians to access their patient's wider clinical documents securely, and link these to their patient's care records. This will reduce duplication, human errors, economise staffs' time helping to ensure data integrity. These improvements have had a significantly positive effect on Patient Safety.



North Tees and Hartlepool FT

CareScan+

As one of the Scan4Safety demonstrator sites, North Tees and Hartlepool NHS Foundation Trust relished the challenge of breaking new ground by showing how barcodes on surgical implants, medical instruments and general medical products can be used to verify that they are safe prior to use. The team fulfilled this ambition when they developed CareScan+ which is a purpose built decision support tool making use of 'a simple scan' to enable the provision of real-time and fully audited patient safety alerts. CareScan+ also registers surgical implants for track and trace purposes.

CareScan+ was built by the NHS for the NHS.



Tameside and Glossop Integrated Care FT

Supporting safe patient care through information technology

The District Nursing Team were reporting pressures on their service due to increased demand, which they felt was impacting on the care they delivered.

In the co-design of the tool the District Nurses were insistent that in order to ensure patient safety and to enable them to provide the right care at the right time, the tool needed to support them in providing individualised care. By using the tool, they are able to monitor a patient's progress, and are aware if a patient's conditions are becoming more complex. This allows the team to have 'safer person-centred rather than task orientated' conversations with patients and health and care professionals.



Tameside and Glossop Integrated Care FT, Safe Steps and Health Innovation Manchester

Safe Steps: Developing an evidence-based digital risk assessment platform

Safe Steps is an app to help reduce falls through standardised and effective falls risk management. Assessing 12 key risks - based on NICE guidelines - and providing CQC approved recommendations for multifactorial intervention via a secure, easy-to-use web application.

Safe Steps has been implemented at the Stamford Unit - a 93 bed intermediate care unit in the grounds of Tameside & Glossop Integrated Care NHS Foundation Trust. In this setting - a first for the UK as previously only used in Care Homes - it has been used almost 3,000 times by 46 members of staff and helped to reduce falls in the first 6 months by 29%.



Thank you to our partners

Strategic Partner



BD

Key Partner

**General
Medical
Council**

Stay in touch...

To keep up-to-date with the HSJ Patient Safety Awards please **click here** to fill out our form

You will be kept up-to-date with:



**Entries
Launch**



**Key
Deadlines**



**Judges
Announcement**



**Top
Tips**

Contact Us

Awards Director

Zoe Gammie

T: 0207 250 4608

E: zoe.gammie@wilmingtonhealthcare.com

Media and Marketing

Honey De Gracia

T: 0207 608 9002

E: honey.degracia@wilmingtonhealthcare.com